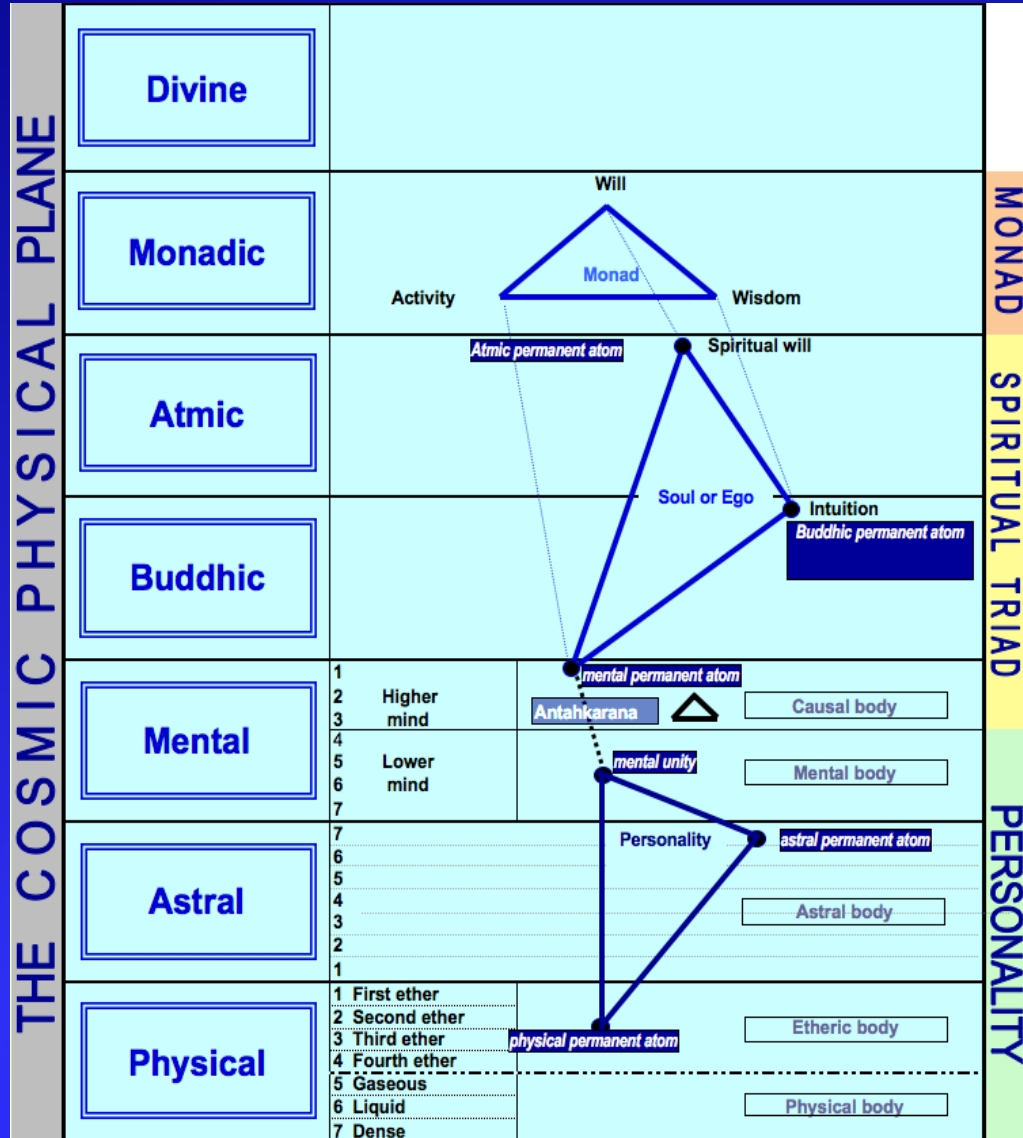
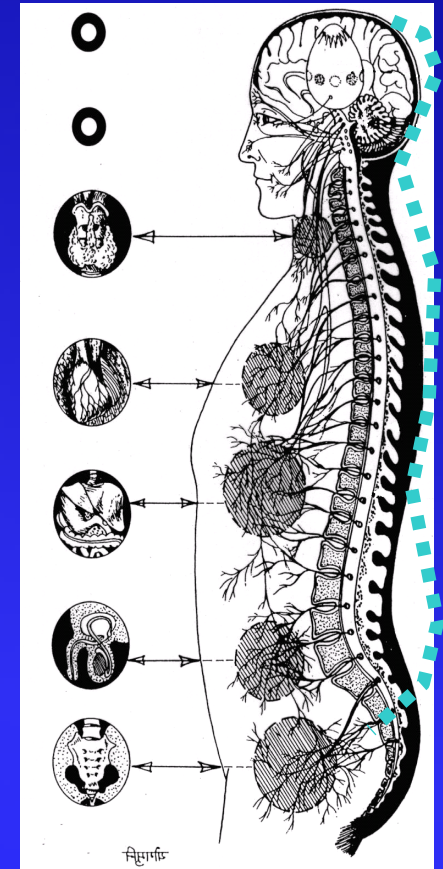


The Constitution of Man



Pineal gland
 Hypophysis
 Thyroid gland
 Thymus gland
 Pancreas
 Gonad
 Adrenal glands



विष्णुर्वाह

SUBJECTS

- Hypothesis
- The seven Root Races
- The Evolution of Consciousness
- The fourfold man - soul / personality mental / astral / physical
- Development of chakras and transfer (initiation)

SOURCES



These teachings come from the Masters of Wisdom, among others Master DK, written by Alice A. Bailey, Helena P. Blavatsky

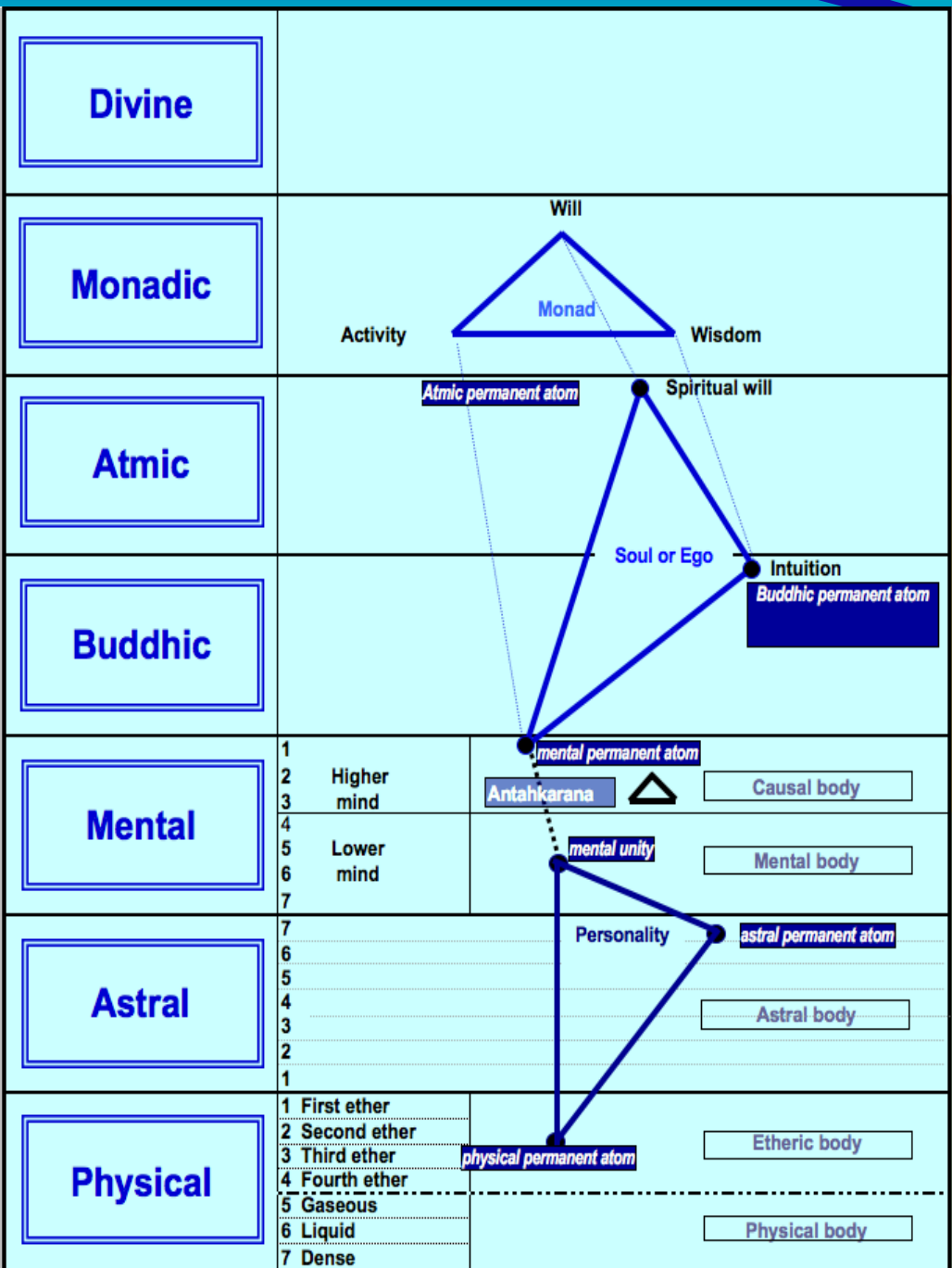
Books and Magazines:



- Occult Meditation
- Rays and Initiation
- A Treatise on White Magic
- Esoteric Healing
- The Secret Doctrine
- The Beacon

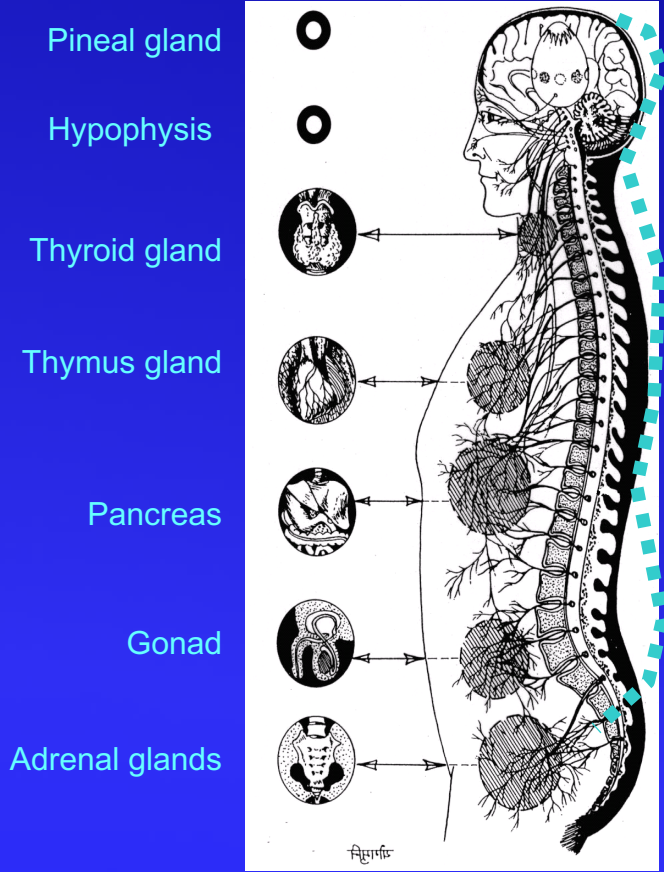
ASSUMPTIONS

- Everything is energy
- There are seven basic energies
- The Law of Cause and Effect
- The Law of Rebirth



MONAD
SPIRITUAL TRIAD
PERSONALITY

The Constitution of Man



EVOLUTION of CONSCIOUSNESS

- The process of evolution of consciousness is the path from crude - to the atomic substance, and includes transforming, integrating and fusing the chakras through knowledge and experience of the seven rays.
- Goal: *Comprehensive awareness* of the cosmic physical plane.
- The etheric body is the *blueprint* for the physical man.
- The soul on its own plane is perfect, but it is aware of itself by means of *earthly experiences*.

EVOLUTION of CONSCIOUSNESS

- Humanity determines the *speed or slowness* of progress.
- As a *personality* the *freewill* is unconditional.
- A soul serves voluntarily within the *group will* and is preserving its individual talents.

THE 7 ROOT RACES

- 1st race - the *astral or ethereal shadows* of the Moon Fathers
- 2nd race - the *Sweat-born*
- 3rd race - the *Egg-born - the Lemurian race* (the development of the physical body)
- 4th race - the *Atlantic race* (the development of the astral body)
- 5th race - the *Aryan race* (the development of the mental body)
- 6th and 7th race - there is little written about.

These 7 Root Races constitute a *Manvantara* (a planetary cycle of physical incarnation or revelation)

THE SEVEN RAYS

1st ray	Will or Power
2nd ray	Love-Wisdom
3rd ray	Active Intelligence
4th ray	Harmony through Conflict
5th ray	Concrete knowledge or Science
6th ray	Abstract Idealism or Devotion
7th ray	Ceremonial order or Magic

THE SEVEN RAYS

Source: Alice A. Bailey: *Esoteric Psychology I* [1936] Ed. Lucis Trust
Virtues and Vices

1. First Ray - WILL or POWER

Virtues: Strength, courage, steadfastness, truthfulness arising from absolute fearlessness, power of ruling, capacity to grasp great questions in a large-minded way and of handling men and measures

Vices: Pride, ambition, willfulness, hardness, arrogance, desire to control others, obstinacy, anger

Virtues to be acquired: Tenderness, humility, sympathy, tolerance, patience

2. Second Ray - LOVE - WISDOM

Virtues: Calm, strength, patience and endurance, love of truth, faithfulness, intuition, clear intelligence and serene temper.

Vices: Over-absorption in study, coldness, indifference to others, contempt of mental limitations in others.

Virtues to be acquired: Love, compassion, unselfishness, energy.

3. Third Ray - ACTIVE INTELLIGENCE

Virtues: Wide views on all abstract questions, sincerity of purpose, clear intellect, capacity for concentration on philosophic studies, patience, caution, absence of the tendency to worry himself or others over trifles.

Vices: Intellectual pride, coldness, isolation, inaccuracy in details, absent-mindedness, obstinacy, selfishness, overmuch criticism of others.

Virtues to be acquired: Sympathy, tolerance, devotion, accuracy, energy and common sense.

THE SEVEN RAYS

Source: Alice A. Bailey: *Esoteric Psychology I* [1936] Ed. Lucis Trust
Virtues and Vices

4. Fourth Ray - HARMONY through CONFLICT

Virtues: Strong affections, sympathy, physical courage, generosity, devotion, quickness of intellect and perception.

Vices: Self-centeredness, worrying, inaccuracy, lack of moral courage, strong passions, indolence, extravagance.

Virtues to be acquired: Serenity, confidence, self-control, purity, unselfishness, accuracy, mental and moral balance.

5. Fifth Ray - CONCRETE KNOWLEDGE and SCIENCE

Virtues: Strictly accurate statements, justice (without mercy), perseverance, common sense, uprightness, independence, keen intellect.

Vices: Harsh criticism, narrowness, arrogance, unforgiving temper, lack of sympathy and reverence, prejudice.

Virtues to be acquired: Reverence, devotion, sympathy, love, wide-mindedness.

6. Sixth Ray - DEVOTION and IDEALISM

Virtues: Devotion, single-mindedness, love, tenderness, intuition, loyalty, reverence.

Vices: Selfish and jealous love, over-leaning on others, partiality, self-deception, sectarianism, superstition, prejudice, over-rapid conclusions, fiery anger.

Virtues to be acquired: Strength, self-sacrifice, purity, truth, tolerance, serenity, balance and common sense.

7. Seventh Ray - CEREMONIAL ORDER or MAGIC

Virtues: Strength, perseverance, courage, courtesy, extreme care in details, self-reliance.

Vices: Formalism, bigotry, pride, narrowness, superficial judgments, self-opinion over-indulged.

Virtues to be acquired: Realization of unity, wide-mindedness, tolerance, humility, gentleness and love.

THE PHYSICAL BODY and the CHAKRA'S

CENTERS

Head Center

Agna Center

Throat Center

Heart Center

Solar plexus Center

Sacral Center

Rump Center

ENDOCRINE GLANDS

Pineal

Pituitary

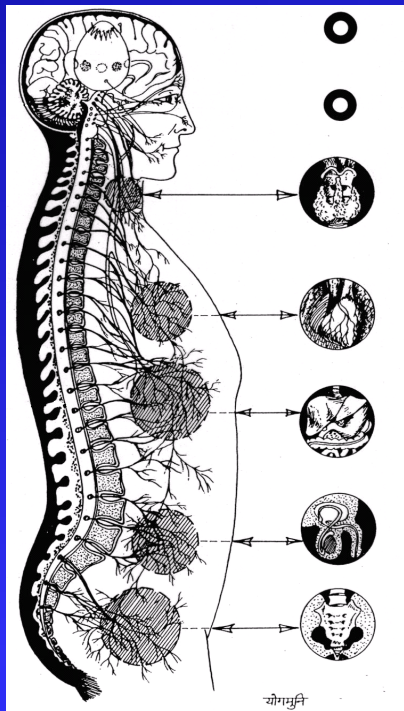
Thyroid

Thymus Gland

Pancreas

Gonads

Adrenal glands



THE PHYSICAL BODY (1)

- The physical body of a human being is composed of coarse and subtle substance
- The etheric vehicle is subtle and consists of innumerable lines of force and energy.
- The etheric body closes like a wetsuit around a human being and the chakras form through the nadis the connection points with the endocrine glands.

THE PHYSICAL BODY (2)

- The *life-thread* is located in the *heart* (silver cord).
- The final *withdrawal* of the thread of life in our hearts is known as death of the physical body. In Esoteric terms this is the transition to a *different* consciousness.
- The *consciousness-thread* (gold cord) is located in the *head*. The term *brain dead* means that the consciousness thread with the *physical brain / brains* is broken, but there is still contact with the soul and his emotional and mental bodies.
- *Creation-thread* is located in the *throat*.

THE PHYSICAL BODY (3)

- The *nervous system* is the gross equivalent (negative aspect) of millions of *nadis* of the etheric part (positive aspect).
- The *7 major endocrine glands* are through the nervous system the first recipients of the energies of the *seven chakras*. They are responsible for the establishment of the gross body.
- *Blood flow* is the carrier of the *life principle* (prana), combined with energy from the etheric body, nervous system and endocrine glands and is located in the *heart*.

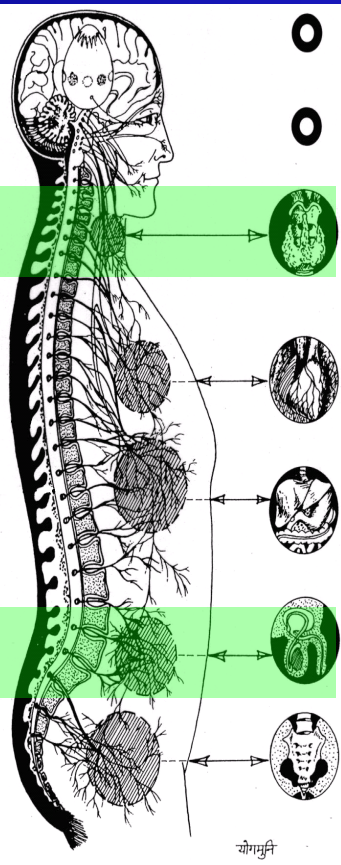
THE CHAKRAS (1)

Sacral Center

- This is in the lower part of the lumbar region, controlling one's sex life. Sex corresponds to the instinct of physical unity.

Throat Center

- In the external form represented by the *thyroid gland*. Purpose: to monitor the health. The center of the creative Word. The first transfer from sacrum to throat center, *1st initiation, the Birth*.
- This initiation is considered as an admission on the Path; they are now on the probation path. It is the first of the five human initiations.



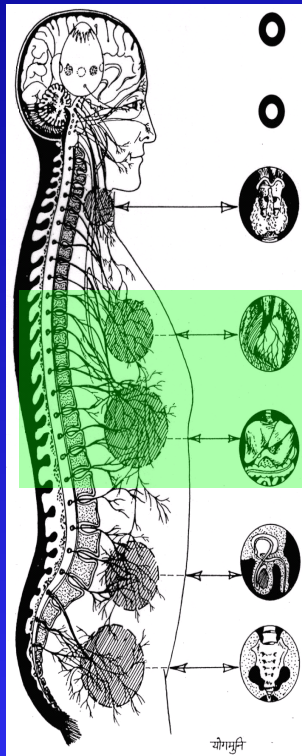
THE CHAKRAS (2)

Solar Plexus

- It corresponds to the *pancreas*. Center of desire. Cleaning place for all energies. The transfer place of the chakras below the diaphragm to those *above* the diaphragm.

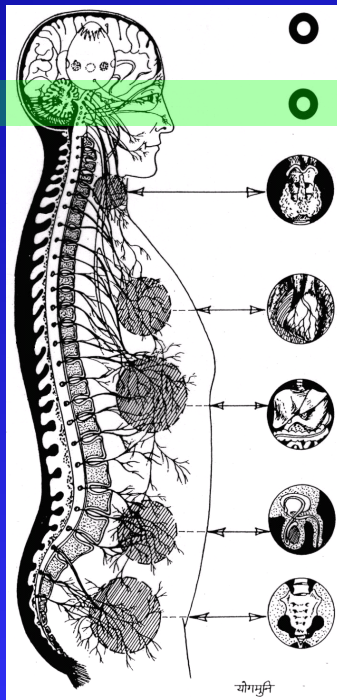
Heart Center

- This is located between the *shoulder blades* and corresponds to the thymus gland. This becomes only really effective from the 2nd initiation - *group consciousness*.
- The Heart Center is the organ for the distribution of hierarchical through disciples and initiates: The Baptism.



THE CHAKRAS (3)

Agnacenter



- Is physically located *between the two eyebrows*. Gross matter analogous to the *carotid artery* at the bottom of the skull.
- From the 1st initiation the agna center becomes gradually active and with this relates the construction of the *Antahkarana* (bridge - see diagram).
- Esoterically the Antahkarana lies between the *pituitary gland* (Agnacentrum) and *pineal gland* (Crown Chakra).

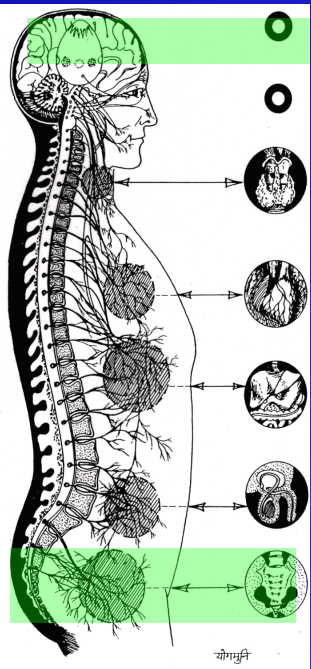
THE CHAKRAS (4)

Crown Chakra

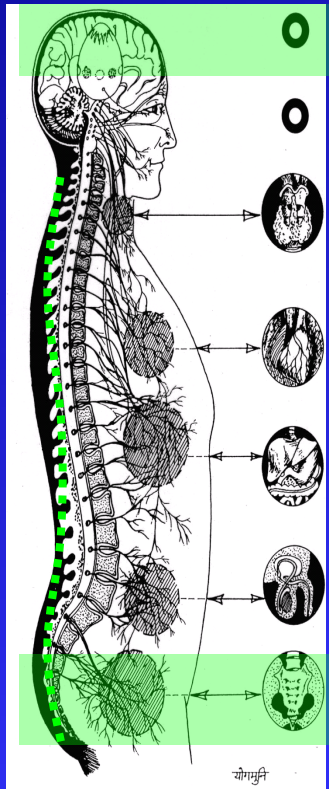
- Head Center is analogous to the *pineal gland* (epiphyses), and is situated at the height of the *crown*. This center becomes fully effective after the 3rd initiation, the *Transfiguration*.

Trinity

- Alignment of Monad - soul - personality.
- This functions to spread Monadic energy through the soul.
- The head center is connected to the *rump center*.



THE CHAKRAS (5)



Crown Chakra

- At the 4th initiation, the Crucifixion or the Great Renunciation, the connection between upper and rump chakra will be working. This occurs *simultaneously* with the dissolution of the *causal* body or the repository of the soul.

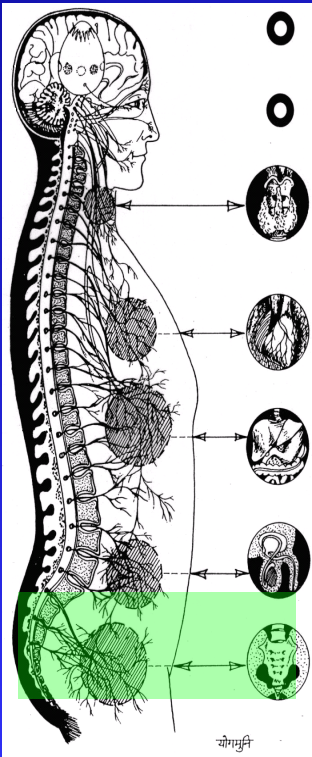
Twofold

- Alignment of Monad and personality.
- Mind / Matter
- Father / Mother
- Monad / Personality.

THE CHAKRAS (6)

Rump Centre

- The will to Be is located at the bottom of the spine and is called the *Mother of the World*. God's Serpent undergoes two changes:
 - The serpent of *matter* is rolled up *until* the 1st initiation.
 - The serpent of *Wisdom* is transformed through a natural process from the 1st initiation and is *completed* at the 3rd initiation.
- The serpent of Wisdom is called the *Dragon of Light* at the 5th initiation.



IMPORTANT !

- The *Kundalini* develops *automatically* and so the webs between the chakras will disappear in a *natural* way.
- *To call on or stimulate* the Kundalini forces through courses, training or meditation is very dangerous, unless one has taken the 3rd initiation and then there is no need for it.

INITIATION (1)

Before the 1st initiation:

- These are *strong personalities* and they have already influence on the world. A few lifetimes *before* the 1st initiation there is a need for *meditation*. The focal point of consciousness is on the physical plane (sacral chakra).
- The physical lower areas are almost *purged* from the *gross* substance. *After* the transformation, the focus is on the *astral* plane. The field of work focuses on the higher turn of the spiral.

INITIATION (2)

Between the 1st and 2nd initiation

- The *astral* body is so perfected that mental control is very difficult to obtain.
- Halfway between the 1st and 2nd initiation starts *mental* polarization on the 4th mental lower region.

INITIATION (3)

Between the 2nd and 3rd initiation

- At 2.5 begins *spiritual* polarization, that is: the influence of the Buddhic, Atmic and Monadic areas.
- The soul is on track to gain *full control* over the *personality*.

INITIATION (4)

3rd Initiation

- At the *3rd initiation* there is a *soul-infused* personality. For the Masters this is the 1st Initiation, known as the *Transfiguration*.
- Personal karma is redeemed and one deals more and more with group karma.
- Very important is the increasing power to display ideas unveiled by using the mind (lit by the goals of the soul) from the higher areas and turn them into a form. These lives are in general relatively cumbersome.

INITIATION (5)

Between the 3rd and 5th initiation

- the *mental* polarization continues until the 4th Initiation, in the Bible symbolized by the Crucifixion of Jesus. Esoteric: the *Renunciation*.
- At this initiation, the soul is no longer needed as an observer for the three worlds (physical-astral-mental) and *personality* is a direct tool for *monadic* area.

INITIATION (6)

Transfer from Centers or Initiations

- Prior to the 1st initiation: 100,000 incarnations
- 1st from sacral to the throat chakra
- 2nd from the solar plexus to the heart center
- 3rd from the heart to the agna center
- 4th from the agna- to head center
- 5th Mind of a Master

SUMMARY (1)

The *objective* of the Spiritual Hierarchy in this era:

- To bring humanity up on a *higher turn of the spiral* and to inspire toward *self-activity*.
- First phase - *group consciousness*.
- The whole evolutionary process comprises of *transforming, integrating* and *fusing* the chakras through knowledge and experience of the seven rays, from coarse substance to atomic substance (the cosmic physical consciousness).

SUMMARY (2)

The Constitution of Man comprises:

- the soul and its vehicles: physical (coarse and fine material), astral and mental body.
- The *soul* works through the personality with its seven chakras related to the seven major endocrine glands, nervous system and blood flow.

REFERENCES

- ***Occult Meditation*** - Alice A. Bailey, auth. Transl.[English] N. Copijn and Regina L.V. Tierie-Versteegh. - 2nd ed - Wassenaar. Mirananda, 1977. ISBN 90-6271-558-3
- ***Rays and Initiation*** - Alice A. Bailey; [Trans. English]. - 1st dr - The Hague: Mirananda, 1975 (A Treatise on the Seven Rays, Part V). ISBN 90-6077-532-5.
- ***A Treatise on White Magic*** - the way of the disciple. Alice A. Bailey; Authorized trans. [English] Madelon de Man. - Wassenaar: Mirananda, 4th ed. ISBN 90-6271-668-7
- ***Esoteric Healing*** - Alice A. Bailey; Authorized trans. [English] Regina L.V. Tierie-Versteegh. - Wassenaar: Mirananda, 4th edition (A Treatise on the Seven Rays, Part IV). ISBN 90-6271-568-0.
- ***The Secret Doctrine*** - Helena P. Blavatsky – W.B. Fricke edition - 1931.
- ***The Beacon*** - January-February 2006 - Lucis Press Ltd., Suite 54, 3 Whitehall Court, London SW1A 2EF, U.K.