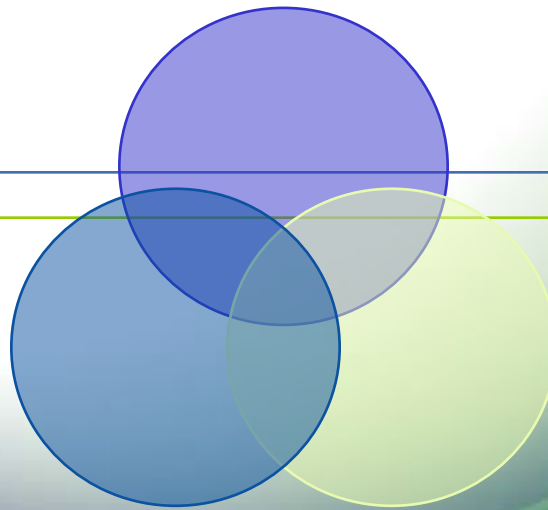


SOMETHING TO THINK ABOUT Organ donation?

Every Person is Unique



UNKOWN, UNLOVED

Accountability

- 📖 Items that can give Food for Thought, are made from the following topics that are or have been discussed in society.
- 📖 The interpretation of the following New Psychology is based entirely on my own initiative and come from my own responsibility.
- 📖 The next slide is an imaginary diagram of the macrocosm and microcosm. As above, so below. The basic principle of the Constitution of Man.

Elly Lichtenberg

De New Psychology - Alice A. Bailey

📖 The Evolution of Consciousness is based on the following assumptions and laws:

- Everything is energy
- There are seven basic energies
- The Law of Cause and Effect
- The Law of Rebirth

Another Light on current assumptions?

- 📖 Emotions, thoughts and perception of our physical body are facts for us. For many people it is not recognizable from what source we feel, think and act.
- 📖 Why must one person suffer, and the another one seems so lucky?
- 📖 The contradictions in the experience of everyday life sometimes seem so big and unjust.
- 📖 In the New Psychology, there may be clues that can shed new light on the conditioned thinking.

The King of Katoren

Young children today show an increasingly **more inclusive** consciousness and they can teach us a lot if we are willing to **listen**.

My granddaughter was reading the book **The King of Katoren** by Jan Terlouw. She told that the king was dead, and I asked her: “How do you feel about death? Are you afraid of it, and do you think that there is still more after death?”

Anne's Story

Anne 7 years



Anne 8 years:

When I'm dead, I become very big (she spread her arms like wings). Then after a while, there are a lot of pictures of family next to each other, and then the pictures go into each other becoming one single picture. I am again very small and dive into that picture and am born with my mom.

Sebastiaan's Story

Sebastiaan 6 years:



Sebastiaan 7 years:

Her little brother completed it with his philosophy:

When you're dead then God is sitting at the box office, and fathers, mothers and children stand there while God says: "You will go to that father and mother or you go to that child".

A few weeks later - obviously having thought about it - he said: "It was not God who was sitting at the cash register, but the helper of God"

Wisdom or Fantasy?

Is this wisdom or fantasy?

Anne:

- 📖 Her knowledge of a comprehensive consciousness after death and the formation of a group within herself to be born again is not a fantasy, because it gives clearly and simply evidence of the **Law of Rebirth**.

Sebastiaan:

- 📖 He also explains in a simple but clear way the **Law of Karma**, without the emotionally charged idea of debt settlement. There is a sense of divinity in himself, which is also called the immanent God.
- 📖 A year before these statements they had made drawings, which symbolically were representing the same wisdom.
- 📖 These children live in an intellectual environment where religion nor esotericism plays a role.

More clues

These stories give even more clues, e.g.:

- 📖 That the soul is **immortal**, only the observable physical body dies.
- 📖 That heaven exists **not** just **after** death, but that one can be aware of this during his **earthly life**.
- 📖 That the **Knowledge** of these children is without **prejudice** and they do not feel bound by an existing religion with its dogmas.
- 📖 That they know **no fear** of death and are more aware of the task or job in this live and in that specific group or with specific people, though they may not be able to name it.

Vision from the esoteric point of view

- 📖 The soul is **perfect** on its own plane, but becomes conscious of Himself thanks to earthly experiences.
- 📖 The soul chooses under the laws of Karma and Rebirth a new incarnation, meant as a **learning process**. In other words, each incarnation is like going back to school and doing exams.
- 📖 We can succeed but we can also continue to sometimes stay down a class or get bad marks. But there is always an opportunity for a **re-examination**. The soul knows no time.

Vision from the esoteric point of view

- 📖 With each following class learning becomes more difficult, but, you've also gained more knowledge how to apply it. Cheating in examinations is not appropriate anymore, one must acquire the final result **on its own**. The Path to a wider consciousness can only be run by one's own experience.
- 📖 The ability of the soul, through the mind, is to see through our glammers (delusions). One gradually comes to realize that most difficulties have **not been done to us**, but are caused by the attachment to it.
- 📖 This hypothesis can provide insight into our problems and teach us to deal with it in another way.

The Constitution of Man

📖 The physical body is built, based on the sum of all experiences in previous incarnations (astrologically: the Moon). This composition provides the soul opportunity for new experiences in the physical realm.

📖 **Every** human being is made with energy on the **soul** and the **personality**, and more on the mental, the astral and the physical body.

Based on this hypothesis one could say that:

📖 every person is **unique** in the composition of its bodies.

📖 every person has his own **mission**.

📖 every human being is at some point in the evolutionary process.

📖 It must consequently be so that the implantation of **organs** from others creates **confusion** in the objectivity of the soul.

Organ donation and karma

- 📖 On the basis of the Law of Karma, in addition to a composition of different energies, one can also start to carry a piece of Karma, that belonged to the donor.
- 📖 This may have **significance** for both the receiver and the giver.
- 📖 There have been cases of **individual change**, however, as the possible change comes out much less explicit, the possibility remains that the karmic consequences in other lives might come into play.
- 📖 At present, the knowledge and wisdom on the Law of Karma are still not sufficiently present to make a right decision.

Example

Change of Person can occur for various reasons, e.g.:

- 📖 The chakra, associated with the diseased organ of the recipient may physically be composed differently in the relationship **physical - ethereal** than the organ of the donor. (See slide 26 et seq “The Constitution of Man”)
- 📖 Also, the type of energy may be **different** from that of the donor. There are seven Rays (energies).
- 📖 The receiver may have a different **karmic** mission in this life than the giver.
- 📖 Within **family relationships** types of energy may be the same, but they need not have the same content; In addition, both of them, the donor and the recipient, may have **different** individual karmic assignments, recognizable by e.g. different characters.

Questions

This raises certain questions, in addition to the physical problems, such as:

📖 Is it **intended** that the receiver has to live much longer on this earth?

📖 Did the **desire** to live longer arise by fear of death or by what happens after death? Or is it the fear of suffering?

📖 Could it be that the very suffering can bring us **insights** into life and death, or to become aware of our source of life or **Soul**?

📖 Is the **attachment** to our physical body the real source of our makeable world?

A kidney donation and its consequences

An example of one **possible** change of person:

📖 A young man studied **law**, received a new kidney during his studies. He improved visibly and decided to break off his studies and to start studying for the **priesthood**. After a few years he died.

This turnaround in the career could, esoterically seen, possibly be a clue, and give a different perspective on the situation.

📖 A human being has different energies in different bodies, **depending** on what **needs to be learned**.

A kidney donation and its consequences

- 📖 This young man studied law, a life focused on analysing, scientific support and stand up for the rights of others. The attention is focused on the **mental body**.
- 📖 The kidneys form the removal organ of toxins and are related to the etheric body and coccyx. Many people have kidney problems and suffer from **constipation**, see p.77 Esoteric Healing Eng. edition.
- 📖 He received a new kidney, which is apparently differently composed, and with a different evolutionary purpose because:

A kidney donation and its consequences

- 📖 After the operation shifted to the kidney recipient's attention to a **celibate life** - (blockage of the sacral or sexual chakra), while the original purpose of his soul was apparently **scientific** development.
- 📖 Congestion in the etheric body can occur in each chakra. In this particular case, deliberate abstinence indicates primarily to the sacral chakra.
- 📖 See Esoteric Psychology Part I - Gender and Discipleship and Esoteric Healing, blz.177 and New Psychology 1, p 237.

Hypothesis

- 📖 In the case of this young man, one might assume that he took his kidney problem from the **previous incarnation**, as he had problems with it at young age.
- 📖 An externally imposed celibacy involves **suppression** of the sex life. In the mystical phase one is still emotionally (astrally) polarized and **consequently** suppressing is bad for body and soul, as the soul influence is inhibited and may cause diseases.
- 📖 Given his **choice** in this life to follow a university course, it is suggested that there was a new possibility to experience his emotional and physical feelings with the **correct purpose**.
- 📖 If you want to read more about this, see the lectures: *From Bethlehem to Calvary 1, 2 and 3* and *The Constitution of Man*.

Esoteric approach

- 📖 Esoterically, man goes at a certain point in the evolutionary process from the **mystical** phase to the **intellectual development** under the influence of the Soul.
- 📖 It is necessary after the mystical stage to learn to **master** the **mental** body; often is chosen for a scientific discipline.
- 📖 In the next phase, or incarnations, the mystical experiences and personal illusions, from the **mind**, illumined by the soul can be **judged** on their merits properly.
- 📖 This phase is also called the Arjuna experience or **The Noble Middle Path**. (See White Magic, Line 7, from p. 164.

No organ donation, but what else?

📖 The esoteric principle is: the etheric body, the endocrine glands, nervous system and blood flow constitute the physical, emotional and mental body. Each person has an individual composition of energies and an individual point of evolution.

📖 From this one can draw the conclusion that organs of well-meaning donors, create confusion in the goal of the soul.

📖 Only the implantation of **own stem** cells could contribute to the health of man (without damage).

Issues for consideration

For medical science:

- 📖 Investigation of own stem cells should be given much more attention worldwide.

For political leaders:

- 📖 Gaining more information relating to options other than organ donation and give the public the choice, so: no law stating that!
- 📖 Making more money available for investigations of Own Stem Cells

The Future

- 📖 It can be observed in young children (Indigo children) that they are **more comprehensive** in their consciousness and that they have healthier physical bodies. In the future this will also apply for humanity.
- 📖 One will then be **aware** of the challenge in that life.
- 📖 The fear of death will be **overcome**. People with near-death experiences bear witness to this. See, inter alia, scientific research by the cardiologist Dr. Pim van Lommel.
- 📖 One will know when the proposed task is **completed** in that one incarnation, making the physical body (a conscious decision taken by the soul) to be abandoned. One returns to the area where one will continue to **work** at a different level of consciousness without a physical body and not - like Christianity it has proposed - enjoy the "eternal rest".

Epilogue

The premature ending of life.

- 📖 Suicide is not an act of the soul, but of the **personality**, which is not able to cope with the difficulties in the physical life.
- 📖 By ending life itself, the **target** of the Soul is **hindered** rather than the killing of a specific physical body.
- 📖 So **not a punishment from God**, but **postponing** the process of awakening. (See Esoteric Healing p. 321).

Epilogue

For consideration for all people who want to prematurely end their lives.

📖 The years and the task that man's own soul has set a target for that life is fixed (no matter if one is now conscious of that or not).

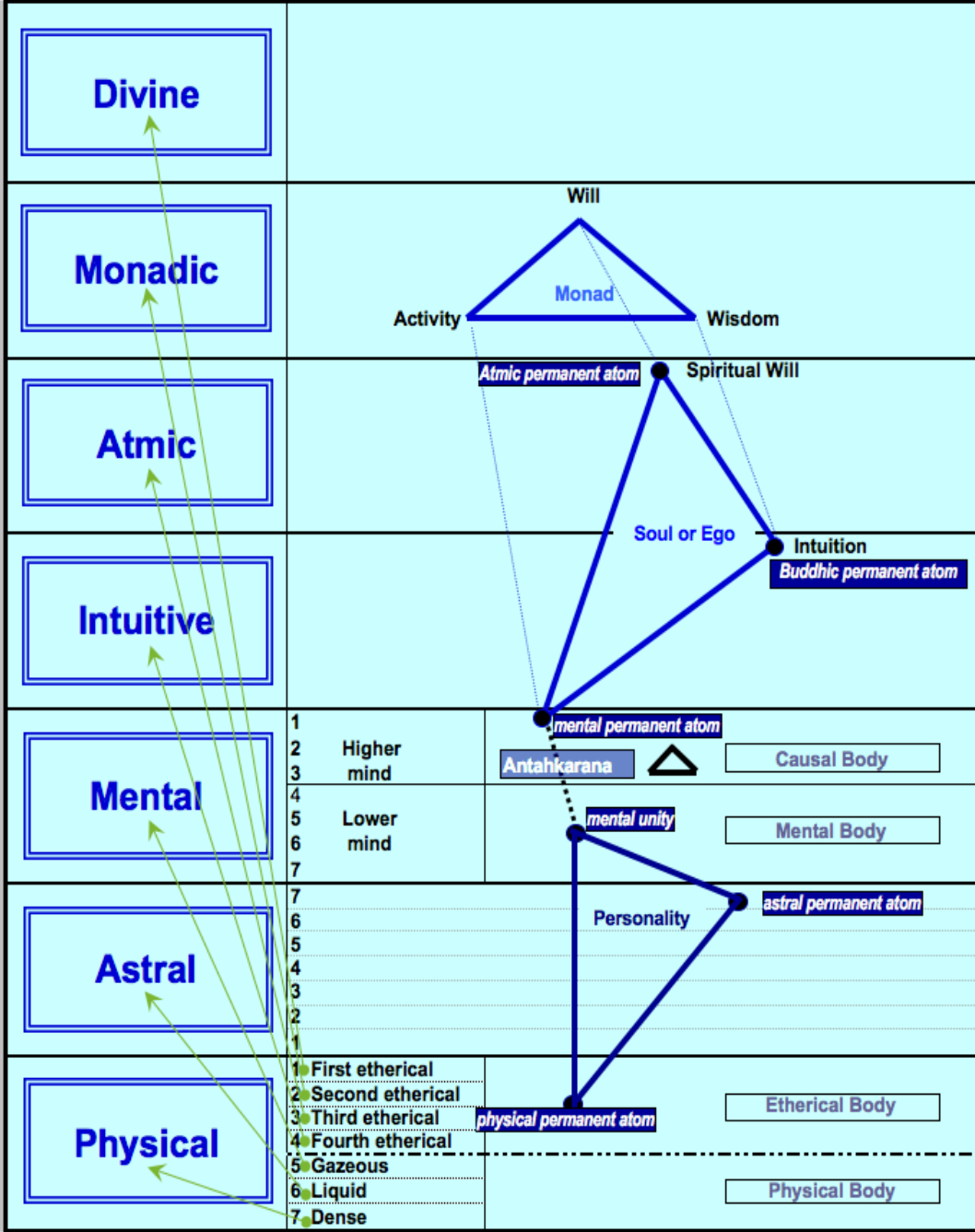
📖 **Breaking** physical life will not change the problems, because **after** the death, consciousness remains in the field, wherever it stood **before** death.

📖 See the lecture: *Death, the bringer of Change* (in Dutch)

📖 Information about **Euthanasia** see Esoteric Healing, p. 236.

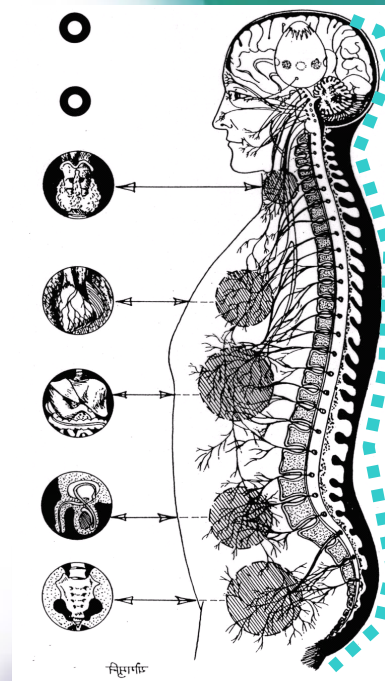
The Constitution of Man

- 📖 The following slides give a brief summary of the Constitution of Man.
- 📖 Want to know more? See *Lecture [The Constitution of Man](#)*. - see also www.ngwd.nl)



THE CONSTITUTION OF MAN

Pineal gland
 Hypophysis
 Thyroid gland
 Thymus gland
 Pancreas
 Gonad
 Adrenal glands



Evolutie van bewustzijn

- 📖 The process of evolution of Consciousness is the way of **gross matter** to **atomic substance** (see diagram on slide 27) and includes transforming, integrating and the merging of the chakras. The knowledge and experience of the seven Rays is manifested through the five senses. 7 energies are recognized by properties and its glammers (delusions).
- 📖 The soul on its own plane is perfect, but becomes **aware of itself** by means of **earthly** experiences.

The Seven Rays

1st Ray: Will or Power

2nd Ray: Love-Wisdom

3rd Ray: Active Intelligence

4th Ray: Harmony through Conflict

5th Ray: Concrete Knowledge or Science

6th Ray: Abstract Idealism or Devotion

7th Ray: Ceremonial Order or Magic

Characteristics of these energies, see reading
The Constitution of Man.

The Ethereal Body

- 📖 The **ethereal body** is composed of the dominant energies to which the person, group, nation or the world reacts in a certain time, cycle or world period.
- 📖 E.g. Pisces was influenced by the **6th Ray** - the Age of Aquarius is influenced by the **7th Ray**.
- 📖 The individual has primarily to do with the energies of:

Soul - Personality - Mental Bodies - Astral Body - Physical Body

The Physical Body in relation to the Chakras

CENTRES

ENDOCRINE GLANDS

Head Centre

Pineal

Ajna Centre

Pituitary

Throat Centre

Thyroid

Heart Centre

Thymus Gland

Solar Plexus

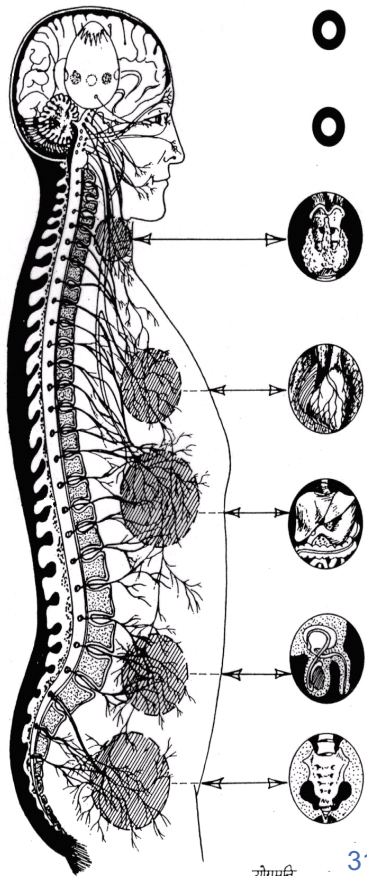
Pancreas

Sacral Centre

Gonads

Coccyx

Glands of the adrenal glands



The Physical Body (1)

- 📖 The **physical** body of man is composed of gross and subtle substance.
- 📖 The **etheric** vehicle is subtle and consists of innumerable lines of force and energy.
- 📖 The etheric body closes like a **wetsuit** for man and the chakras through nadis, being the connection points with the **endocrine** glands.

The Physical Body (2)

- 📖 The life thread is located in the **heart** (silver cord).
- 📖 The definite withdraw from the **life thread** from the **heart** we know as the determination of the death of the physical body.
- 📖 Esoterically this is the transition to a **different consciousness**.
- 📖 The **consciousness thread** (golden thread) is located in the head.
- 📖 This means that in case of **brain death** the consciousness thread with the physical brain is **broken**, but there is still contact with the soul and his emotional and mental bodies. So **brain death** is not dead.
- 📖 The **creation thread** is located in the **throat**.

The Physical Body (3)

- 📖 The **nervous system** is the gross counterpart (negative aspect) of millions of **nadis** of the etheric part (positive aspect).
- 📖 The **7 major endocrine glands** are the first recipients of the energy of the **chakras**. They are responsible for the establishment of the **gross-physical** body.
- 📖 Blood flow is the carrier of the **life principle** (prana), combined with energy from the etheric body, nervous system and endocrine glands and is located in the **heart**.

Sources

Books

📖 Alice A. Bailey: **Esoteric Healing** – Lucis Trust

📖 Alice A. Bailey: **Esoteric Psychology Part 1** – Lucis Trust

📖 Alice A. Bailey: **A Treatise on White Magic** – Lucis Trust

More information: www.lucistrust.org/arcane